

# Clear Liquid

Take a moment to look through our menu. To place your order, **dial 6255**

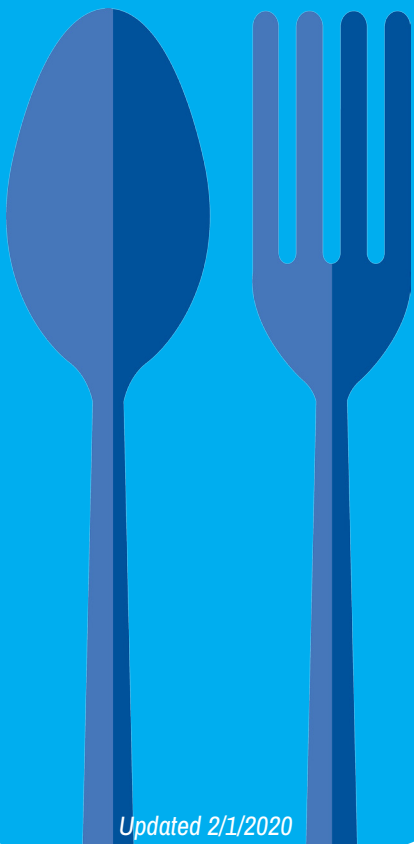
We are available to take orders from 7 AM - 5 PM daily.

Your nursing staff is available to assist you with menu selections during your stay.

Please allow up to 45 minutes for your meal to be delivered.

There is a limit of one guest tray per meal per room.

Your 100% satisfaction is our number one goal. If, for any reason, our meal service does not meet your expectations, please call the Dietary Manager at extension 3206 and let us know how we can better serve you, our guest.



## **Broth:**

- ▷ Chicken
- ▷ Beef

## **Finishing Touches:**

- ▷ Italian Ice (*lemon, strawberry*)
- ▷ Jell-O (*orange, strawberry*)
- ▷ Sugar
- ▷ Honey

## **Beverages:**

- ▷ Coffee (*regular or decaf*)
- ▷ Tea (*regular or decaf*) (*hot or cold*)
- ▷ Cola
- ▷ Lemon lime soda
- ▷ Apple juice
- ▷ Grape juice
- ▷ Cranberry juice

# About Your Diet

*This diet can be ordered to prepare for surgery or for problems tolerating solid foods. The diet consists of clear liquids and foods that are liquid at room temperature.*